

49

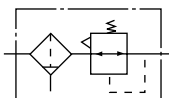
系列
Series

气源处理元件
Air Filter Combination

497(AW1000~5000) 系列过滤减压阀 series Filter Pressure Regulate Valve



图形符号 Graphical symbols



型号注释 Order Code

497(AW) ○ ○ D

空气过滤器减压阀组合件
Combination of air filter and pressure regulate valve

阀体型号: Valve body model

接管螺纹/ Connection threads

空白: 手动排水或停气排水
D: 自动排水型号
non: manual drain or air shut off drain
D: Auto Drain Model

技术参数 Specification

保证耐压力/Pressure Resistance	1.5MPa(15kgf/cm ²)
最高使用压力/Max Working Pressure	1.0MPa(10kgf/cm ²)
环境及流体温度/Ambient And Fluid Temperature	5~60℃
过滤精度/Filter Precision	25μm
容器材料/Bowl Material	聚碳酸酯/Polycarbonate
防护罩/Protective Cover	AW1000~2000(无) / (Not Available)AW3000~5000(有) / (Available)
调压范围/Pressure Regulating Range	AW1000:0.05~0.7MPa(0.5~7kgf/cm ²)AW2000~5000:0.05~0.85MPa(0.5~8.5kgf/cm ²)
阀型/Valve Type	带溢流型/With Overflow

*还有5、50 μm可供选择。/5, 50μm available in addition

型号 Model	规格/Specifications				配件/Accessories		放水器功能/ Drain Funcuion	注1) 自动排水型号/ /Note1)Auto Drain Model
	注2) 额定流量 /Note2)Rated Flow(L/min)	注3) 接管口径 /Note3)Port Size(G)	压力表口径 /Pressure Gauge Size	重量 /Weight (Kg)	托架 /Bracket	压力表 /Pressure Gauge		
(497)AW1000-M5	100	M5	1/16	0.09	B120	G27-10-R1	手动排水 /Manual Drain	(497)AW2000-01D (497)AW3000-02D
(497)AW2000-01	500	1/8	1/8	0.36	B220	G36-10-01		
(497)AW2000-02		1/4						
(497)AW3000-02	2000	1/4	1/8	0.56	B320	G36-10-01	a. 停气排水 /Air Shutoff Drain b. 手动排水 /Manual Drain	(497)AW3000-02D
(497)AW3000-03		3/8						(497)AW3000-03D
(497)AW4000-03	4000	3/8	1/4	1.15	B420	G46-10-02	a. 停气排水 /Air Shutoff Drain b. 手动排水 /Manual Drain	(497)AW4000-03D
(497)AW4000-04		1/2						(497)AW4000-04D
(497)AW4000-06	4500	3/4	1/4	1.21	B420	G46-10-02	a. 停气排水 /Air Shutoff Drain b. 手动排水 /Manual Drain	(497)AW4000-06D
(497)AW5000-06	5500	3/4	1/4	1.70				(497)AW5000-06D
(497)AW5000-10		1			(497)AW5000-10D			

注1) AW2000有两种自动排水结构可选, 脉冲式自动排水器为常规选型, 还有杠杆式自动排水器可选, 订货时用“D2”表示, 如: AW2000-02D2;

AW3000~AW5000自动排水器结构以杠杆式为常规选型, 还有浮球式自动排水器可选, 详细说明请参阅自动排水器介绍。

注2) 供应商压力为0.7MPa (7.1kgf/cm²)的情况下。

注3) 接管口径另有Rc、NPT螺纹可供选择。

Note1) There are 2 types auto drain for AW2000, pulsed type and lever type. "D" means normal auto drain, pulsed type; "D2" means lever type auto drain. For Example: AW2000-02D2.

The normal auto drain for AW3000-AW5000 is lever type, but the float type auto drain is available for chose. Please check the details from AUTO DRAIN is page 55.

Note2) On condition that the supply pressure is 0.7MPa(7.1kgf/cm²) and set pressure is 0.5MPa(5.1kgf/cm²).

Note3) Rc, NPT thread are available.